

# TECHNICAL DATA SHEET

## S.5370 MICROREEF

SIMES  
luce per l'architettura

### -PRODUCT TYPE

Bollard fitting .  
IP rating IP 65

### -MATERIAL CHARACTERISTICS

Aluminium die cast housing in EN AB 47100 with high resistance against corrosion.

Stone wash surface treatment prior to painting process.

A4 grade Stainless Steel screws with 2,5-3% molybdenum content which increases the resistance against corrosion.

Pre treated Silicone Gaskets.

Painting Process :

3 Step Process

1) Surface treatment with BONDERITE . A heavy metal free chemical surface treatment containing ceramic nano particles giving a cohesive, inorganic and highly dense protective coating .

2) PRE POLYMERIZATION a process of introducing an epoxy primer with excellent characteristics to the paint which also offers very high resistance to oxidation due to its Zinc content.

3) POLYMERIZATION a process with the application of polyester powder with high resistance against UV rays and harsh weather conditions. Improved protection for Marine applications.

Mechanical resistance of glass IK 10

### -LIGHTING PERFORMANCE

Reflector in aluminized polycarbonate.

Polycarbonate lens transparent with controlled downward light emission for avoiding any glare, UV-stabilised and vandalproof .

The position of the LED placed inside the head allows for better heat dissipation.

Lamp fixed position .

LOR --

Compact electronic ballast to guarantee better lamp stability, lifetime and reduced energy consumption.

### -WIRING

Cable entry with M20 cable glands ( $\varnothing$  8÷12 mm).

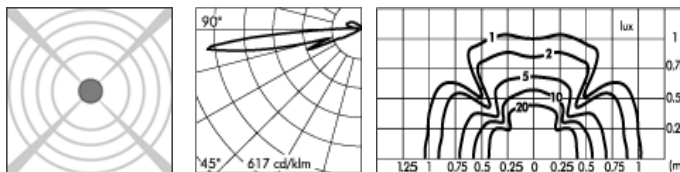
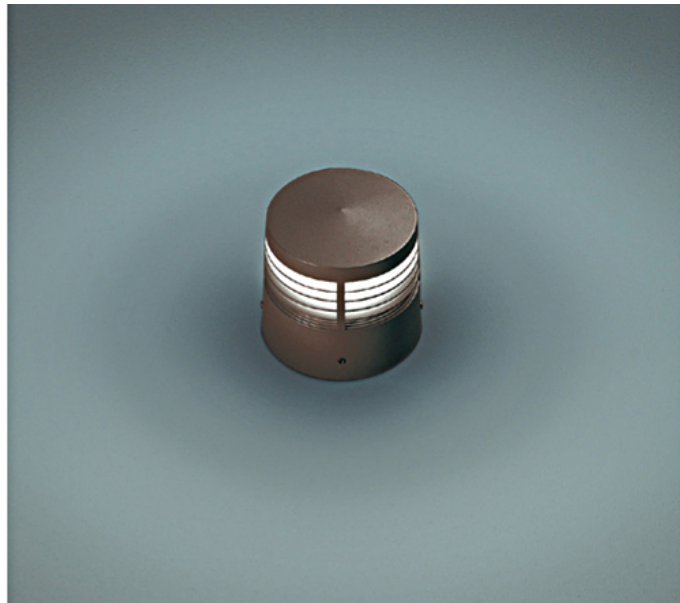
Isolation: CLASS II .

Available colours: ALUMINIUM GREY (cod.14), RUSTY CORTEN (cod.18).

Weight: 1.3 Kg

Glow Wire test: --

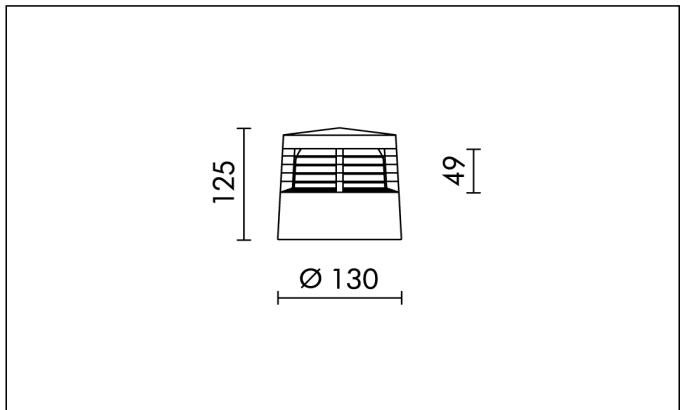
Class 2 L.E.D circuit included. (CEI EN 60825-1:2003-02)



\* Photometric measured using COLD WHITE LED 6100K

4 ACCENT LED 6100K 10W 230V  
Electronic transformer 100/240V 50÷60Hz

IP 65



LAST UPDATE 14/09/2010

SIMES S.p.A.  
Via G.Pastore 2/4  
25040 - Corte Franca - BRESCIA (ITALY)  
<http://www.simes.com> - e-mail: [simes@simes.com](mailto:simes@simes.com)

Tel:  
Export Sales: +39 0309860440  
Technical Dep. +39 0309860450  
Lighting Design Dep.: +39 0309860425

Fax:  
Export Sales: +39 0309860449  
Technical Dep.: +39 0309860459  
Lighting Design Dep.: +39 0309860429



The present technical data sheet and all the information contained is property of SIMES S.p.A. All rights reserved.  
We reserve the right to change specifications without prior written notice.

# TECHNICAL DATA SHEET

## S.5370

### ACCESSORIES FOR MICROREEF

# SIMES

luce per l'architettura



**S.3524**

**STAKE**

In POLYPROPYLENE.

Colour: black (code 09)

Length = 270 mm

The 90 mm upper part must stay above ground level, according to the norm.



**S.5301**

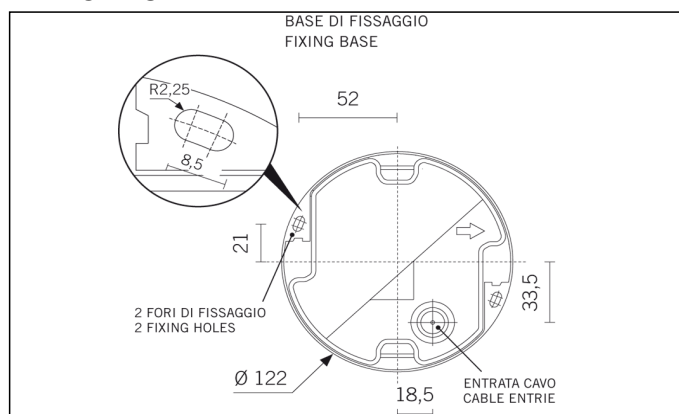
**FLANGE FOR GROUND APPLICATION**

Flange  $\varnothing$  130mm h 155mm to be fixed in concrete with stainless steel screws for fixing in the ground.

Footstall dimension can be calculated according to your country norms and ground properties.

## Further information

### FIXING BASE



LAST UPDATE 14/09/2010

SIMES S.p.A.  
Via G.Pastore 2/4  
25040 - Corte Franca - BRESCIA (ITALY)  
<http://www.simes.com> - e-mail: [simes@simes.com](mailto:simes@simes.com)

Tel:  
Export Sales: +39 0309860440  
Technical Dep. +39 0309860450  
Lighting Design Dep.: +39 0309860425

Fax:  
Export Sales: +39 0309860449  
Technical Dep.: +39 0309860459  
Lighting Design Dep.: +39 0309860429



The present technical data sheet and all the information contained is property of SIMES S.p.A. All rights reserved.  
We reserve the right to change specifications without prior written notice.